

Revolution Machine Tools



| |
|--|
| Main Warehouse |
| 385 North 700 West |
| North Salt Lake City Ut. 84054 |
| www.RMTUS.com |
| Sales: Phone: (844)768-4636 info@rmtus.com |
| Service: Phone: (844)RMT-SERV (844)768-7378 service@rmtus.com |
| Parts & Tooling: Phone (844) 768-4636 Talip@rmtus.com |
| Prepared by: Kyle Jorgenson |

Machine Specifications

| | | | |
|----------------------------------|------------------------------------|---|----------------------|
| RMT Machine Stock Number: | 704 | Machine - Shipping - Dimensions and Weight | |
| Manufacture | Pandjiris | Length x Width x Height | 192"-1/4 x 28" x 73" |
| Type | External Seam Welder | Machine Weight in Lbs. | 6800 Lbs |
| Model # | 144E 11-36 | Incoming Power Requirements | |
| Serial # | 600-4405 | Incoming Voltage | 1 PHASE 110V 60 Htz |
| Mfg. Year | Un known | Full Load Current Amps | |
| Status: | Good - Very Usable Condition | Min. Incoming Wire Size | |
| F.O.B. Point | RMT North Salt Lake Utah Warehouse | Recommended Breaker | |
| | | Horse Power | |

Machine Capacity - Capabilities

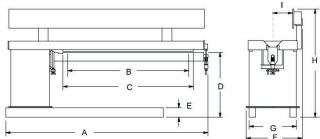
144" EXTERNAL LONGITUDINAL SEAMER (MODEL 144E11-36)

Includes extra - Risers- 16.5", 25", 37.75" & 49.75"

The Model 144E11-36 External Longitudinal Seamer as described includes one copper back-up bar with back-up groove machined to customer's specifications, a water-cooled mandrel, two seam alignment gauges, a variable pressure aluminum fingers clamping system with foot controls, a safety air interlock on mandrel latch, and a machined side beam track for rack and pinion carriage travel.

- Welding Length 144" plus 3" overtravel at each end for starting and stopping on tabs.
- Part Configuration Cylinders 1 1/2" I.D. to 36" O.D., flat sheets, and other configurations which can be placed on the mandrel without structural interference.
- Mandrel 10-1/2" diameter steel pipe equipped with dove tail groove to accept a removable back up bar. Plumbed for connection to an outside water source to enhance the heat sink capabilities of the seamer.
- Back Up Bar Copper with machined groove to support and shape weld puddle.
- Alignment Gauges Two gauges are mounted on the seamer's upper clamping beam opposite the operator. The gauges are designed to pivot down along the centerline of the back up bar. They are used for referencing the alignment of the back up bar, weld joint and torch travel path.
- Material Thickness, Clamping020 through 3/8".
- Clamping Finger 3" wide aluminum, optional copper or stainless steel tips available.
- Clamping Actuation Industrial air bladder clamping, spring return.
- Clamping Pressure 0 to 200 pounds per linear inch.
- Air System Requires a clean 90 psi input. Includes filter/regulator/lubricator.
- Safety System Air interlock prevents clamping if the end latch is open.
- Track Blade Steel blade 3/4"x12" mounted on a 6"x8" box beam. The blade is equipped with pitch and yaw adjustment along the full length of travel. A precision gear rack is mounted on the back side of the blade for carriage travel.
- Carriage See Specification/Price Page G-1 & G-2.
- Electrical 115 Volt, Single Phase, 60 Hz.
- Controls Front and rear footswitch for finger clamping.

PRICE



| | |
|-------------------|----------|
| A Overall Length | 192-1/4" |
| B Weld Length | 144" |
| C Clamping Length | 150" |
| D Mandrel Height | 45" |
| E Base Leg Height | 8" |
| F Overall Width | 34-7/16" |
| G Base Width | 28-1/4" |
| H Overall Height | 73-7/16" |
| I Weld Centerline | 11-3/16" |

Note: customer must verify what voltage the machine is set at - prior to connecting electrical and running machine

All Information subject to Verification

If you have any questions Regarding this Specification sheet, please contact us at info@rmtus.com or (844) 768-4636

Thank You For The Opportunity!



Fiber Lasers



Press Brakes



Shears



Ironworkers



Bandsaws



Plate Rolls



Angle Rolls



Dishing Presses



Flanging Machines



Drilling Machines